

Scenario database and virtual environment to contribute to achieve automated driving safety.

Satoshi Taniguchi

Manager of system design and safety group, JAMA (JPN)

Leader of SAKURA project and international Safety Assurance expert



Organised by



Co - Organised by



Supported by



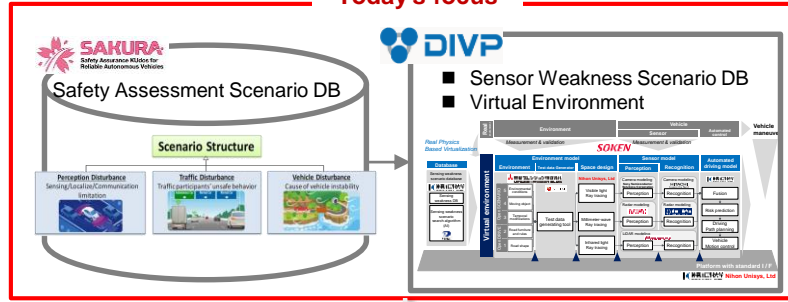
Federal Ministry
of Transport and
Digital Infrastructure

Hosted by



Safety assurance strategic activities in Japan

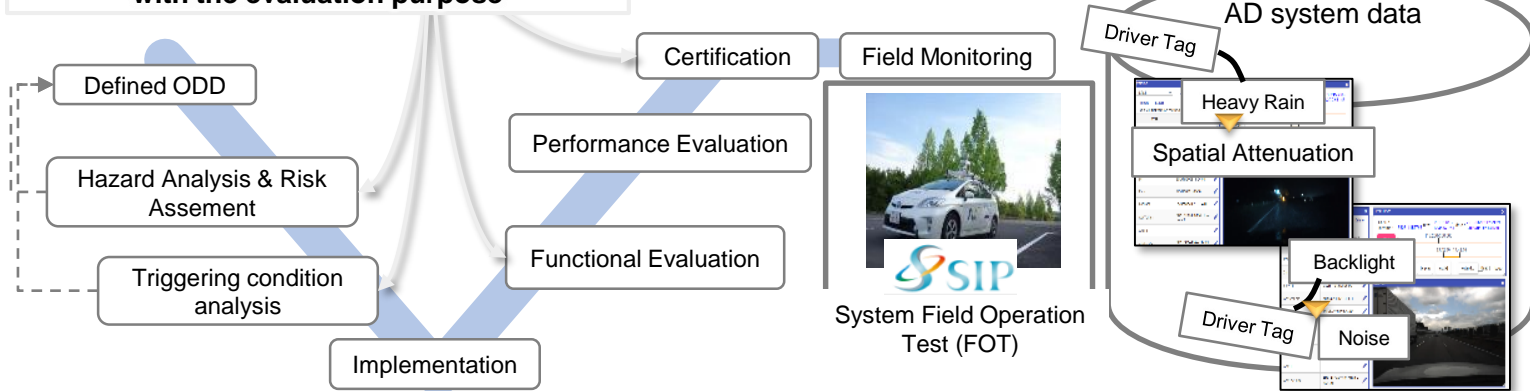
Today's focus



Aim: To build a scalable simulation platform to support safety planning, design and evaluation of AD systems

Scalable simulation platform in accordance with the evaluation purpose

- Linked scenario database and virtual environments for safety assessment



Organised by



Co - Organised by



Supported by

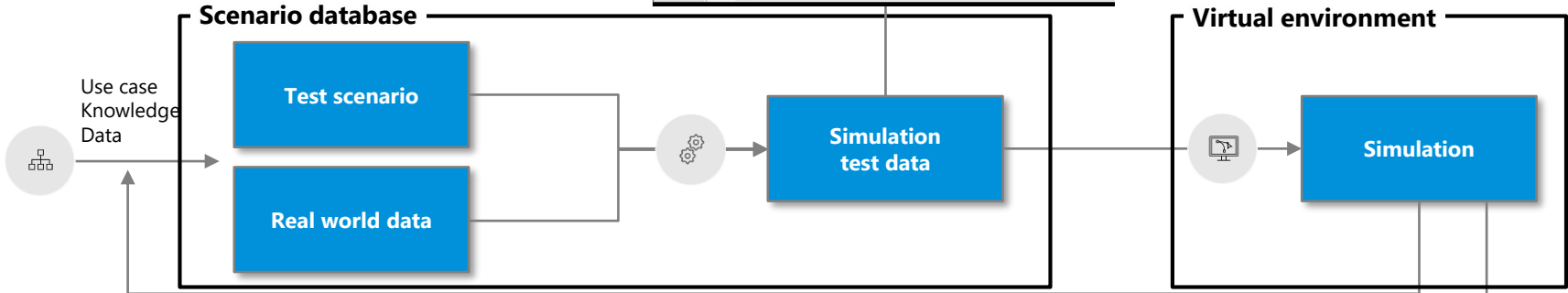
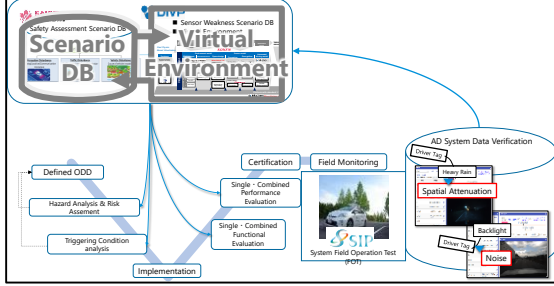
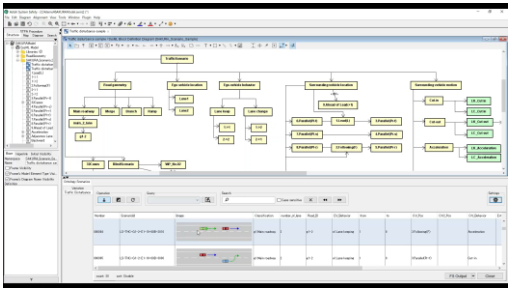


Hosted by

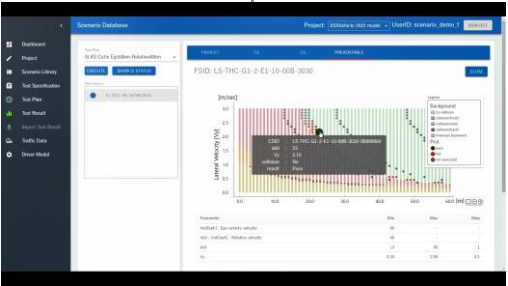


Linked scenario database & virtual environment

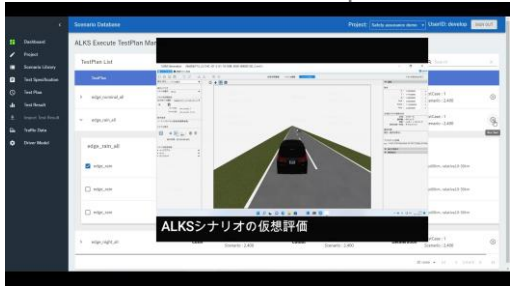
Scenario modeling
Test data generation



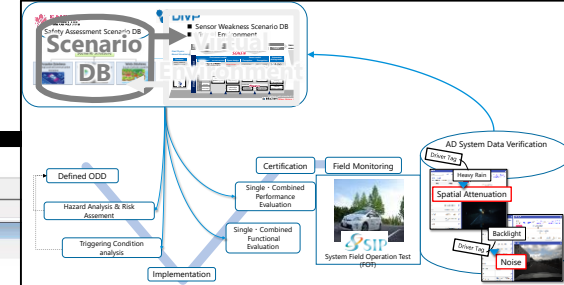
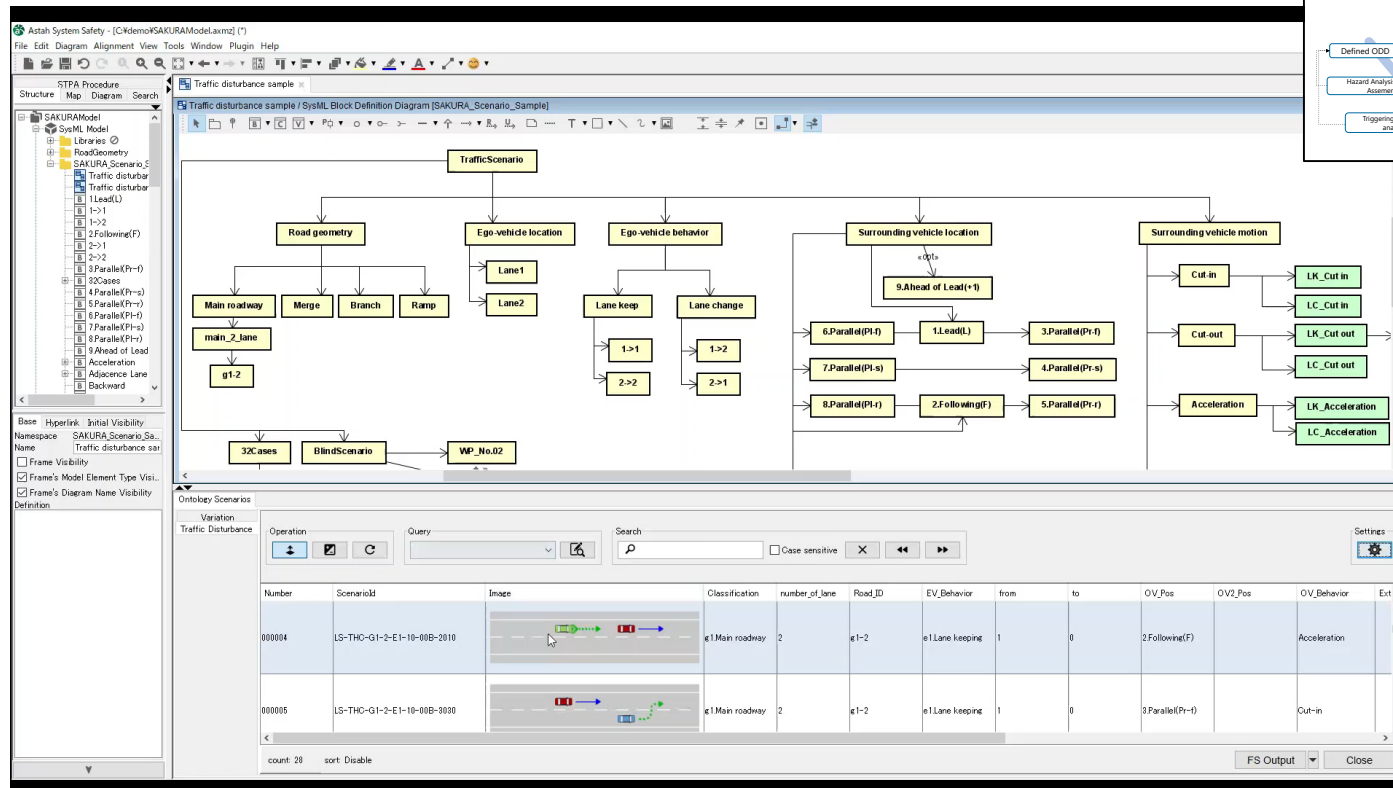
Visualize results



Evaluation



Scenario database



Organised by

Co - Organised by

Supported by

Hosted by

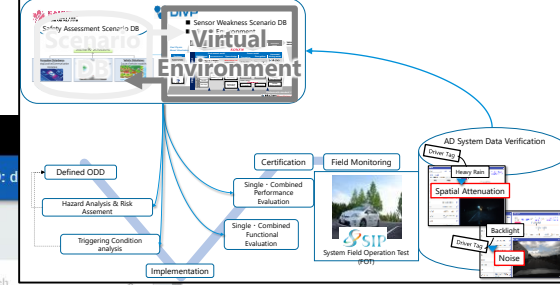


Federal Ministry
of Transport and
Digital Infrastructure



Virtual environment

The screenshot displays the 'ALKS Execute TestPlan Mar' interface. On the left, a sidebar contains navigation options: Dashboard, Project, Scenario Library, Test Specification, Test Plan, Test Result, Import Test Result, Traffic Data, and Driver Model. The main area is titled 'Scenario Database' and shows a 'TestPlan List' with entries like 'edge_nominal_all', 'edge_rain_all', and 'edge_night_all'. The 'edge_rain_all' entry is selected, showing a 3D simulation of a car on a road. Below the simulation, there are three smaller views: 'Cutin', 'Cutout', and 'Deceleration'. The right side of the interface shows a 'Run Test' button and a table of test results.



Organised by



Co - Organised by



Supported by



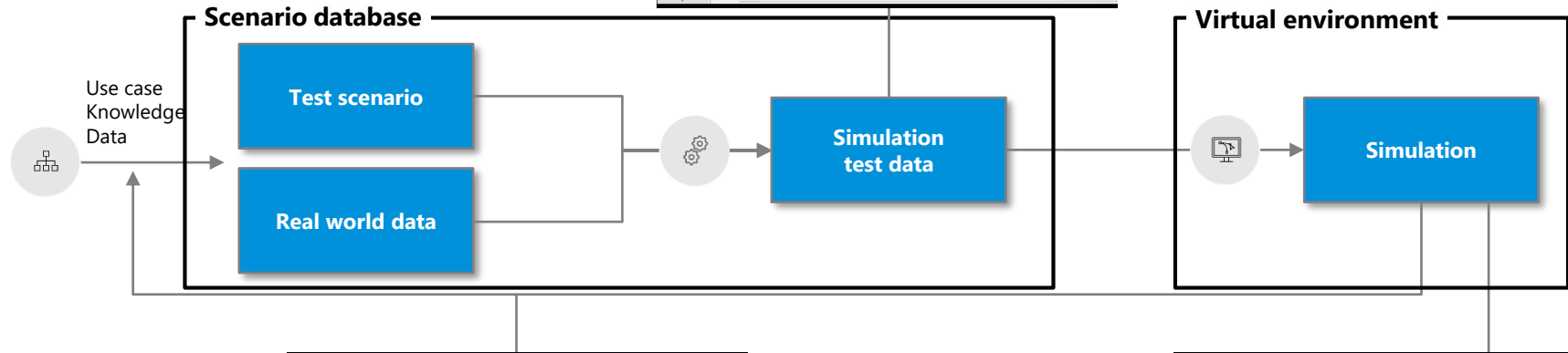
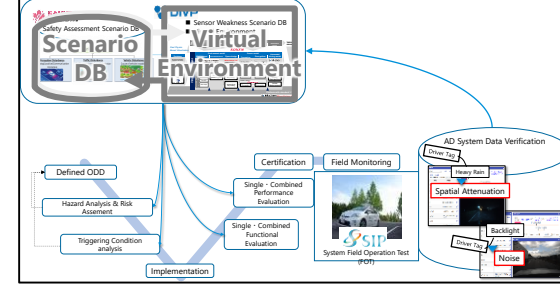
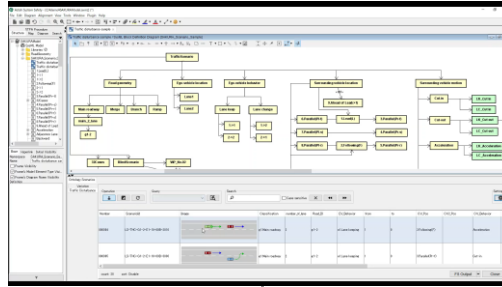
Hosted by



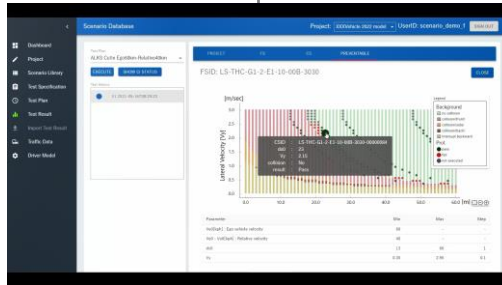
Summary

A scalable simulation platform
to support safety planning,
design and evaluation of AD
systems

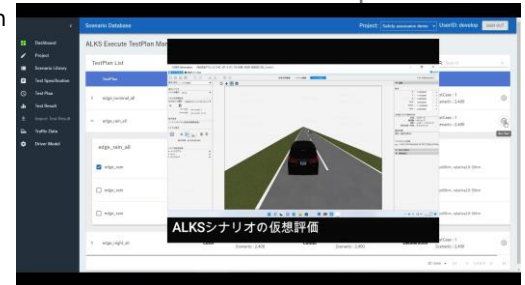
Scenario modeling
Test data generation



Visualize results



Evaluation



Scenario database and virtual environment to contribute to achieve automated driving safety.

Satoshi Taniguchi

satoshi_taniguchi_ad@mail.toyota.co.jp

Organised by



Co - Organised by



Supported by



Federal Ministry
of Transport and
Digital Infrastructure

Hosted by



HAMBURG
ITS World Congress
11 - 15 Oct 2021
Experience Future Mobility Now